

046854

RECEIVED
LARAMIE COUNTY
CHEYENNE, WY.

CERTIFIED LAND CORNER RECORDATION 88 JUL 20 AM 11:30

DESCRIPTION OF CORNER EVIDENCE FOUND, AND ORIGINAL RECORD (If known)
Found red sandstone lying on side with 1/4 marked plainly on East face.
Reset 3" x 8" x 14" stone projecting 0.6 feet above ground.

1/4
S.17 S.16
T.14N., R.64W.
6th P.M.

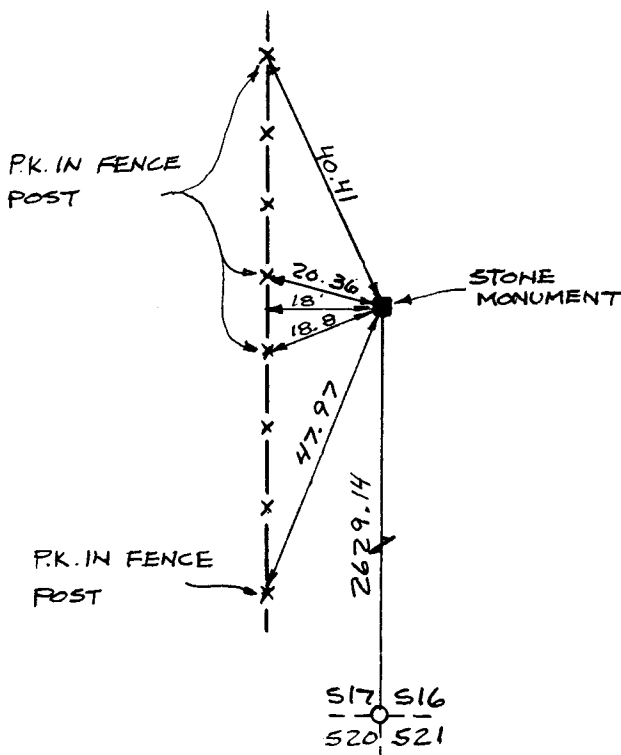
G.L.O. Record: Red sandstone.

DESCRIPTION OF MONUMENT AND ACCESSORIES ESTABLISHED
TO PERPETUATE THE ORIGINAL LOCATION OF THIS CORNER:

At the corner: Not remonumented.

Accessories : See ties below.

SKETCH, WITH COURSE AND DISTANCE TO ADJACENT CORNER IF DETERMINED IN THIS SURVEY.
(May Sketch or Paste Reproduction on Reverse Side.)



I, John A. Steil certify that I have carefully performed or reviewed the work done on the diagrammed corner as reported on this recordation form and approve the same.

John A. Steil
Signature of Surveyor

L.S. 2500
Registration No.

STATE OF WYOMING,
Office of Clerk and Recorder,
County of Laramie

This "corner record" was filed for record on the 20th day of July, 1988, was noted on the cross-index plat and is assigned page No. _____, in book No. _____.

Janet C. Whitehead
County Official

Cross Index No.	<u>L-9</u>	T. <u>14N</u>	R. <u>64W</u>	Mer. <u>6th</u>
_____	_____	T. _____	R. _____	Mer. _____
_____	_____	T. _____	R. _____	Mer. _____
_____	_____	T. _____	R. _____	Mer. _____
_____	_____	T. _____	R. _____	Mer. _____
_____	_____	T. _____	R. _____	Mer. _____
_____	_____	T. _____	R. _____	Mer. _____